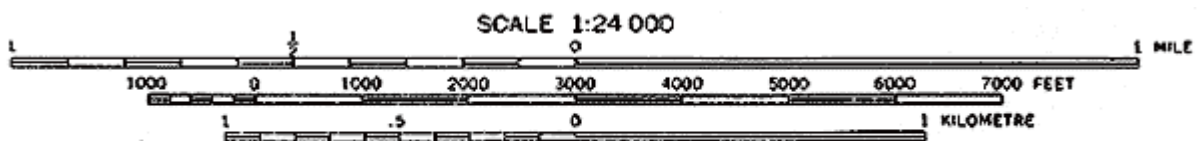
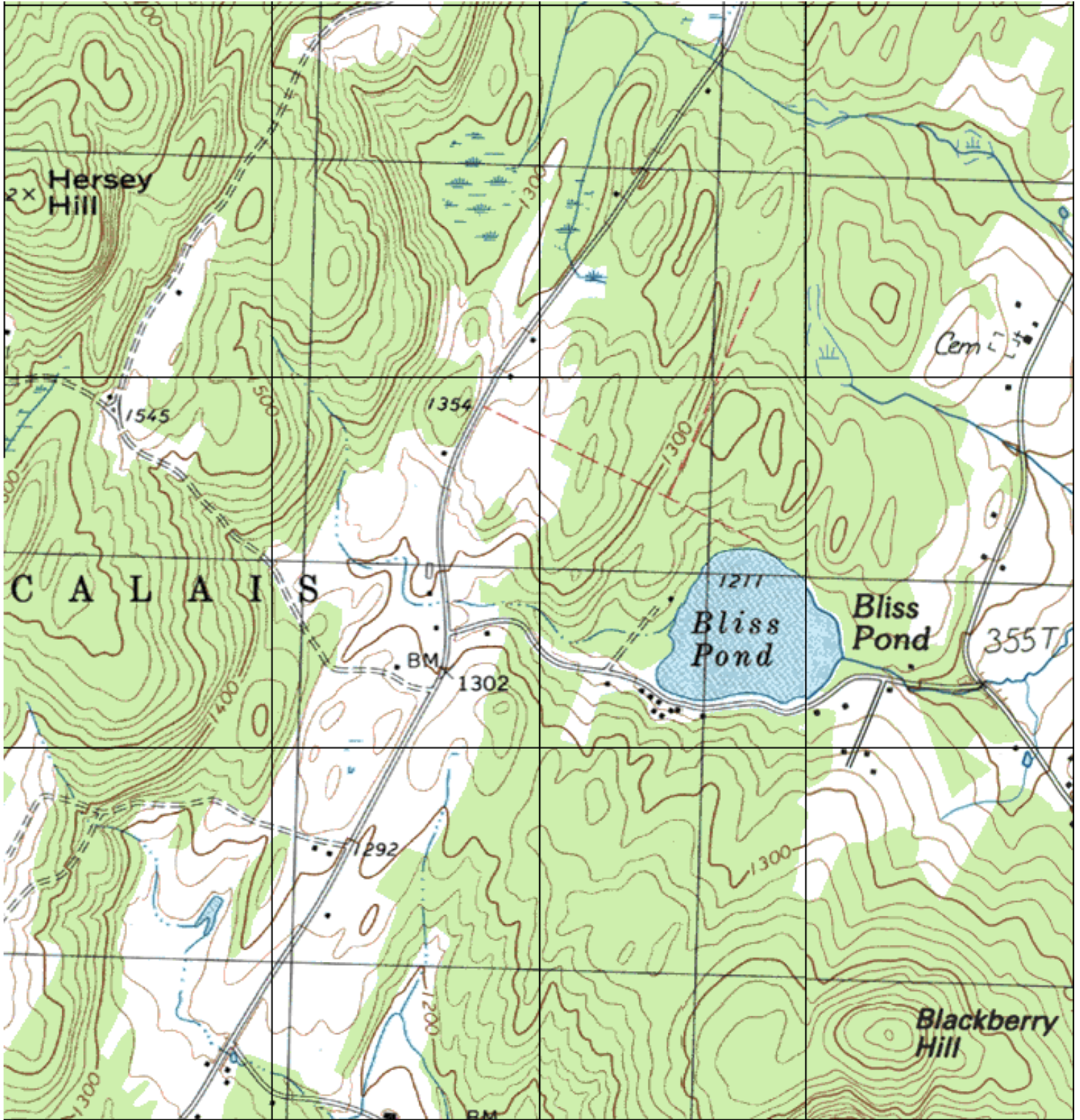


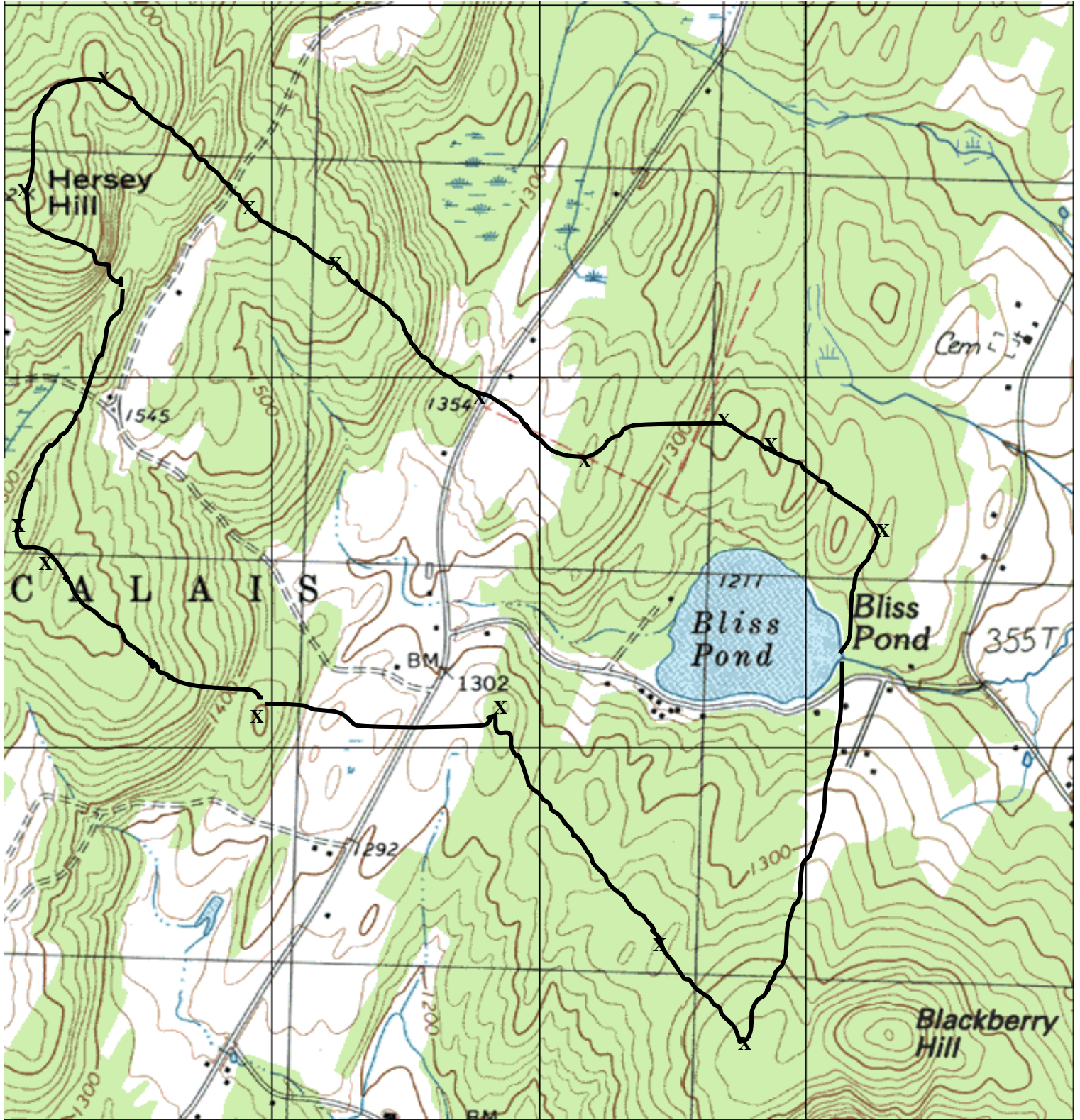
Delineate the Watershed Boundaries of Bliss Pond, Calais, Vermont



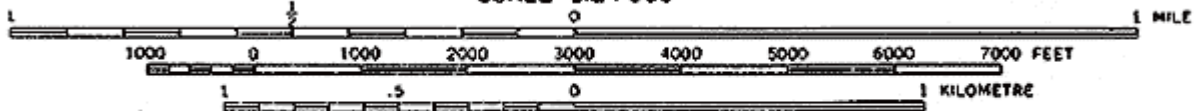
CONTOUR INTERVAL 20 FEET
NATIONAL GEODETIC VERTICAL DATUM OF 1929

Answer Sheet— Watershed Boundaries of Bliss Pond, Calais, Vermont

(the boundary line is not drawn perfectly — a little shaky —from the computer drawing tool)



SCALE 1:24 000



CONTOUR INTERVAL 20 FEET
NATIONAL GEODETIC VERTICAL DATUM OF 1929